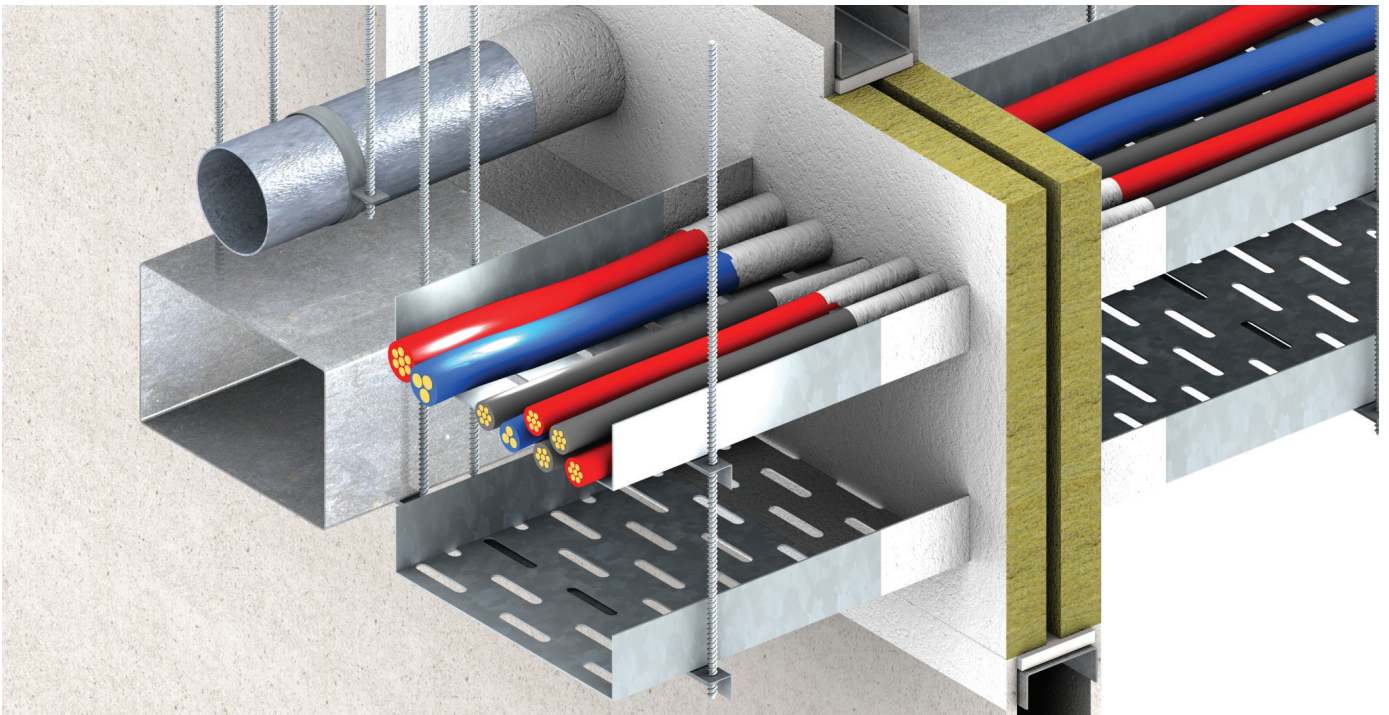
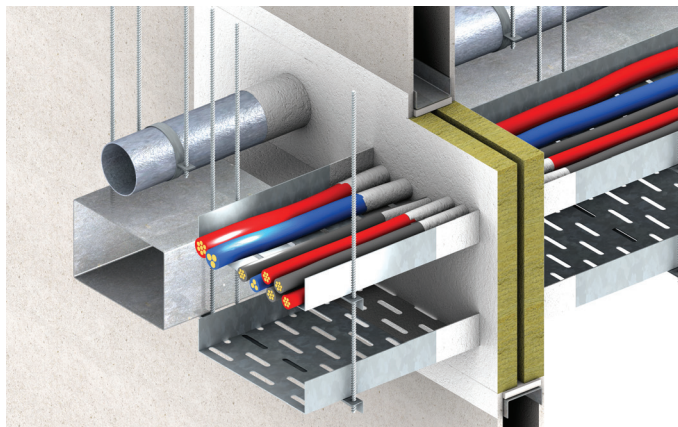


## PROMASTOP®-FIREBATT Product Data Sheet Firestop coated mineral wool batt



[www.promat-international.com](http://www.promat-international.com)





## General description

PROMASTOP®-FIREBATT 50mm and 60mm is a coated mineral wool board used to reinstate the fire resistance performance of wall constructions where they have been provided with apertures for the penetration of single or multiple services. PROMASTOP®-FIREBATT 50mm and 60mm is supplied coated in both single and double coated versions. The board is cut and friction fitted into the aperture while using acrylic sealant. PROMASEAL® Acrylic Sealant is required to seal all joints and junctions during the sealing process.

## Fields of application

All types of M& E service penetration seals in rigid walls and floor construction.

## System advantages / customer benefit

- Fire resistance testing in walls, rigid floors, composite panel, CLT wall and durasteel wall.
- Air permeability
- Acoustic isolation
- Suitable for indoor use without additional environmental protection.
- Remains flexible.
- Life expectancy of over 25 years.
- Suitable for large openings in walls and floors with additional supports

## Test certificate / approval

- UL-EU (01046)



## Packaging

PROMASTOP®-FIREBATT is supplied and packed in polythene bag with standard size of 1200 mm x 600mm x 50mm / 1200mm x 600mm x 60mm.

## Storage requirements

- Store in cool and dry conditions
- Once compacted within the aperture, finish off the edges with a bead of PROMASEAL® Acrylic Sealant to create a seal.

### Installation Pattress Fit

- Upon installation make sure that you install the PROMASTOP®-FIREBATT with 100mm overlap and fix PROMASTOP®-FIREBATT to the substrate with the required fixings dependent on substrate, coat all the edges of the PROMASTOP®-FIREBATT with PROMASEAL® Acrylic Sealant to provide a protective bond across the joint of the PROMASTOP®-FIREBATT and ensure all leading edges of the PROMASTOP®-FIREBATT are coated with PROMASEAL® Acrylic Sealant

## Technical data and properties

<b>Dimensions</b>	1200mm x 600mm x 50mm / 1200 x 600 x 60mm
<b>Coating thickness</b>	1mm Nominal, 2.2kg wet film coating
<b>Fire resistance</b>	Up to 120 minutes
<b>Acoustic performance</b>	60 dB EN 10140
<b>Air permeability</b>	600Pa EN 1026 - 100Pa 1.8/1.4 m <sup>3</sup> /h/m <sup>2</sup>
<b>Thermal conductivity (U value)</b>	0.034 W/mK at 10°C
<b>Maximum size of seal</b>	Wall 5.76m <sup>2</sup> , Floor 2.88m <sup>2</sup>
<b>Acoustic isolation (EN 10140)</b>	52dB
<b>Air permeability (EN 1026 )</b>	2880 x 1440mm (with services) 1200 x 1200mm (no services)
<b>Maximum size - plasterboard</b>	2400 x 1200mm
<b>Maximum size - unsupported floor</b>	1600 x 700mm
<b>Mechanical support</b>	30mm x 30mm x 1.6mm steel angle

## Safety instructions

- Please refer to the safety data sheet for additional advice

## Application instructions

- Ensure that the aperture and services in question are tested with PROMASTOP®-FIREBATT and the site conditions are within the application specification
- All services and apertures need to be clean and clear of all dust and loose particles. The aperture temperature needs to be at +5 deg C or above at time of installation

### Installation Friction Fit

- Upon installation make sure that you install the PROMASTOP®-FIREBATT with 10% friction fit, coat the edges of the PROMASTOP®-FIREBATT with PROMASEAL® Acrylic Sealant to provide a protective bond across the joint of the PROMASTOP®-FIREBATT.



**Head Office**

**Promat International N.V.**

Bormstraat 24

2830 Tisselt

Belgium

T +32 15 718 100

F +32 15 718 109

E [info@promat-international.com](mailto:info@promat-international.com)

[www.promat-international.com](http://www.promat-international.com)

[www.promat-tunnel.com](http://www.promat-tunnel.com)

[www.promat-marine.com](http://www.promat-marine.com)

[www.promat-oilandgas.com](http://www.promat-oilandgas.com)